

Step 1

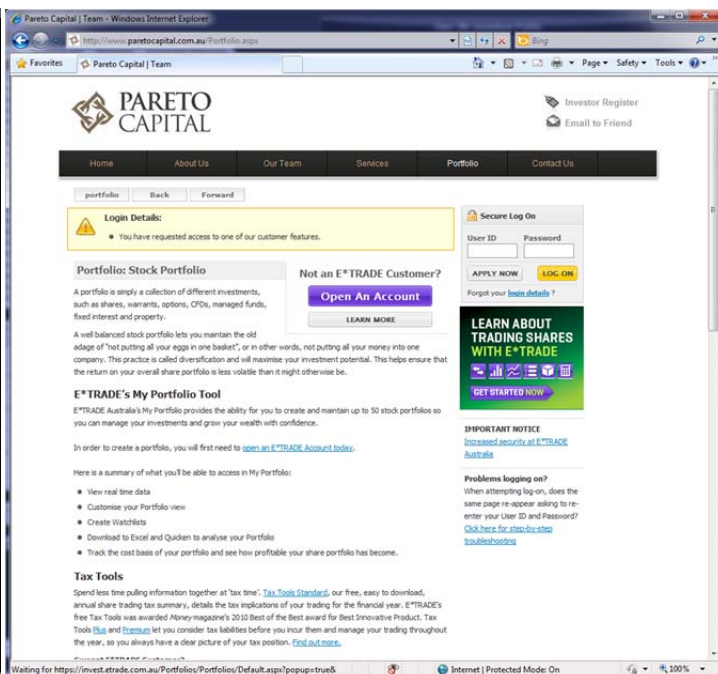
To view your portfolio, go to:

www.paretocapital.com.au

Then click on "Portfolio" in the top menu.

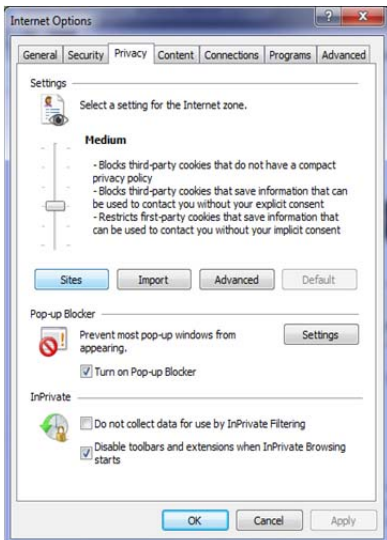
If the Portfolio page appears like the image to the left with a large amount of text and a green advert below the login box, proceed to Step 2.

If the Portfolio page appears like the image in the bottom right, proceed to type in your User ID and Password provided to you by your Pareto Capital adviser.



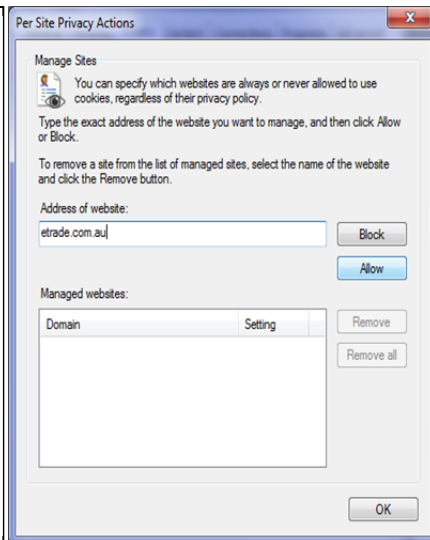
Step 2

In the top left of your browser click "Tools" then select in the bottom of the menu "Internet Options". A pop up will open, click on the "Privacy" tab and then "Sites"



Step 3

A pop up box will open and type etrade.com.au in "Address of website" and select "Allow". Then "OK" out of each screen back to the "Portfolio" page.



Step 4

Once you have completed Step 2 and 3, click again on the "Portfolio" menu and the page should appear like the image to the right. Then proceed to type in your User ID and Password provided by your Pareto Capital adviser.

Should you have any issues in the above steps or when viewing your Portfolio please contact admin@paretocapital.com.au or call (08) 6489 0800

